

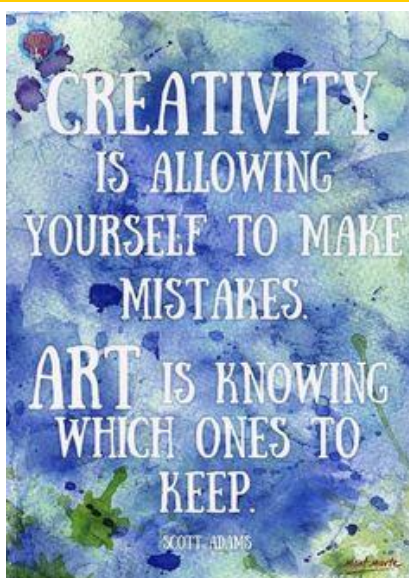


A Monthly Insight into the BALLARAT SOCIETY OF ARTISTS INC

JUNE 2023, EDITION 9 ISSN 2653-6218

In This Issue:

Presidents Report:	page 2
Exhibition roundup:	page 3 & 4
Library News and Book Review:	page 4
Meet the artist:	
Teresa Foster	page 5
Artists corner:	page 6 & 7
Upcoming exhibitions:	page 8 & 9
Sociables:	page 9
Support Our Sponsors	page 10



OFFICE BEARERS 2023

President

Trudy Nicholson

Ph 0407613038

trudynicholson@tpg.com.au

First Vice President

Colleen Simmons

Second Vice President

Sharmaine Riches

Secretary

John Canham

Business Secretary

Susan Clarke

Ph 0409431960

bsamember16@gmail.com

Acting Treasurer

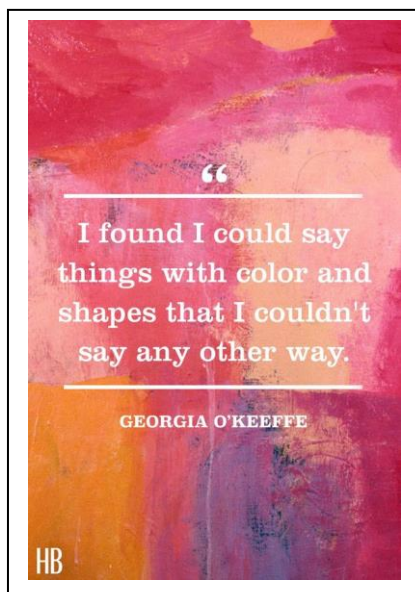
Allan Moody

General Committee Members:

Georgia Brain, Teresa Foster, Anne

Monthly Competition Categories

July –	Nude
August –	Perspective
September –	In the Style of ...
October –	Portrait of a BSA Member
November –	Plein Air
December –	Black and White



Next Meeting

10.30am 1st July 2023

Brown Hill Uniting Church,
Humffray Street North, Ballarat.

Special Guest Speaker

Celle Taylor

Director and Clinical

Psychologist

Blossomtree Psychology

Please bring a plate to share
for lunch.



President's Report

By Trudy Nicholson



Hoi allemaal,

Hier ben ik weer, net een paar dagen uit Nederland.

I arrived on the tarmac at 5.30 am on a cold frosty, wettish morning in Melbourne, June 13th. How does the mind and body react and cope with the short sharp travelling event? When I woke up, after resting my eyes later that day I spoke Dutch to John, my husband. The first thing the morning after, more Dutch conversation spontaneously emerged. My son had said to John, "you may need to deprogram her you know. Haha!" However, what can you expect after being immersed in the Dutch language and culture for three weeks, with your relatives. An unforgettable, wonderful experience. Four years ago, was the last visit.

When visiting the Van Gogh Museum, in Amsterdam, I came across this saying, that Vincent had written to his brother Theo. I felt that this was very appropriate in today's climate.

"I believe that at present we must paint nature's rich and magnificent aspects; good cheer and happiness, hope and love."

I will leave that with you to ponder.

We have had much going on recently within our society and I am sure many of you are aware of the issues we have needed to deal with. As a committee we have met or communicated with each other to discuss these and reached several conclusions. Whilst those particular matters are now closed, the committee believed the Society needed to take some actions that would assist us all to better understand and deal with these situations. Whilst we must always deal with each other in a respectful manner, as an incorporated organization, we also have a legal duty of care to all our members and to people and organisations we deal with.

So, to assist us, we have at short notice, engaged a psychologist to speak briefly at our next meeting in July, at 11.30. She will talk generally and provide insight into the area of mental health, the implications for our Society and how we can do things better. The psychologist will be available to answer any questions that you may have.

We are working on a B.S.A. "Bullying Policy and Procedures" document formulated from information provided by Victorian State Government Bullying policy pro forma literature.

Other events that are taking place will be outlined in the newsletter by the respective members or they will be written on The White Board to be seen at the meeting.

Trudy

Exhibition Roundup

Exciting news, the exhibition commencing 2nd July at the Paddle Steamer and Museum is full!

Art works will be rotated around during the exhibition to keep it interesting and to replace sold works giving the opportunity to members to go on a wait list to submit work during the exhibition as space becomes available.

If you would like to put your name on the wait list, please contact Susan Clarke
email: bsamember16@gmail.com



Trudy Nicholson's exhibition at RADMAC is on until the end of June. She has showcased her art in a beautiful collection that shows the depth and breadth of her amazing talent. The pieces are for sale and would make a fabulous edition to any home or office.



Barkly Square

Following the success of our Summer Pop up Art Show at Barkly Square last December, we ran a Winter Pop up called 'All Seasons' between 14th and 20th June. Being on-site definitely makes a difference and thanks to those who sat on duty between 10 and 3. 15 artists participated with 30 works for sale. We also had cards and unframed available.

The exhibition went extremely well with 7 pieces sold plus numerous cards and unframed pieces. Congratulations to all involved. It was an excellent display and received a great deal of positive feedback and interest.

We will be back there again for the Winter Wonderland Market on the 21st July between 4 and 8 pm. Further details to follow in next months newsletter and the general meeting on the 1st. Please check the notice board.

Corridor Art Space at Trades Hall

Sue is looking for a couple of Artists who have not already exhibited there this year.

If you have 4 or 5 artworks ready to hang for July/August please see her at the July 1st meeting so that she can organise to hang the following week.

This might be an excellent opportunity for our newer members who haven't yet exhibited as a member.

Exhibition Roundup cont'



John Canham, pictured here with Barry Wemyss of the Golden Plains Arts Inc

The Golden Plains exhibition at the Mercure entitled 'Place' is still open until the 9th of July.

With many interesting works including and range of sculptural pieces. Well worth a look.

The opening night was well attended with our own John Canham giving the opening speech.

He spoke of the growth of BSA from our beginning to our many new and exciting exhibitions and how we are embracing and encouraging the future of art within Ballarat and the wider regional community.

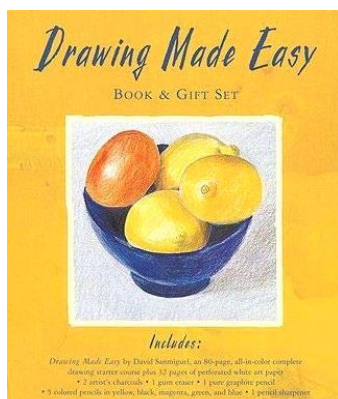
If you have an exhibition that you would like included in the newsletter please email us and include photos of your work, exhibition details such as: name, location, duration, opening night, etc.

Library News and Book Review

Marg and Jane keep our library in a beautifully organised fashion and can recommend books for you based on your needs.

Books are borrowed for the month from general meeting to general meeting. If you are unable to return a book by the following month, please let Marg or Jane know so they can extend your borrowing time and keep track of where the resources are.

Thank you to Jane for providing this month's book review. This book is available from our library.



Drawing made easy

By David Sanmiguel

This book covers all you need to know about drawing.

The introduction helps you to get to know the many different materials and how to use them. It is full of tips on key drawing techniques with many detailed illustrations and clear step by step instructions.

Meet the Artist: Teresa Foster



I have to say that when I joined this Society I was totally in awe of the amazing talent amongst our members. Also, the opportunity afforded to us to extend our skills and exhibit.

I have recently taken over the role of Membership Secretary from Karen Garrett so I have some big shoes to fill so please bear with me while I settle in.

In the meantime, a little about me:

art style- still establishing but love "the old Masters"

When did you begin as an artist - three years ago when I enrolled on a Cert 3 Visual Arts study for something to do having just retired and relocated from the Gold Coast!

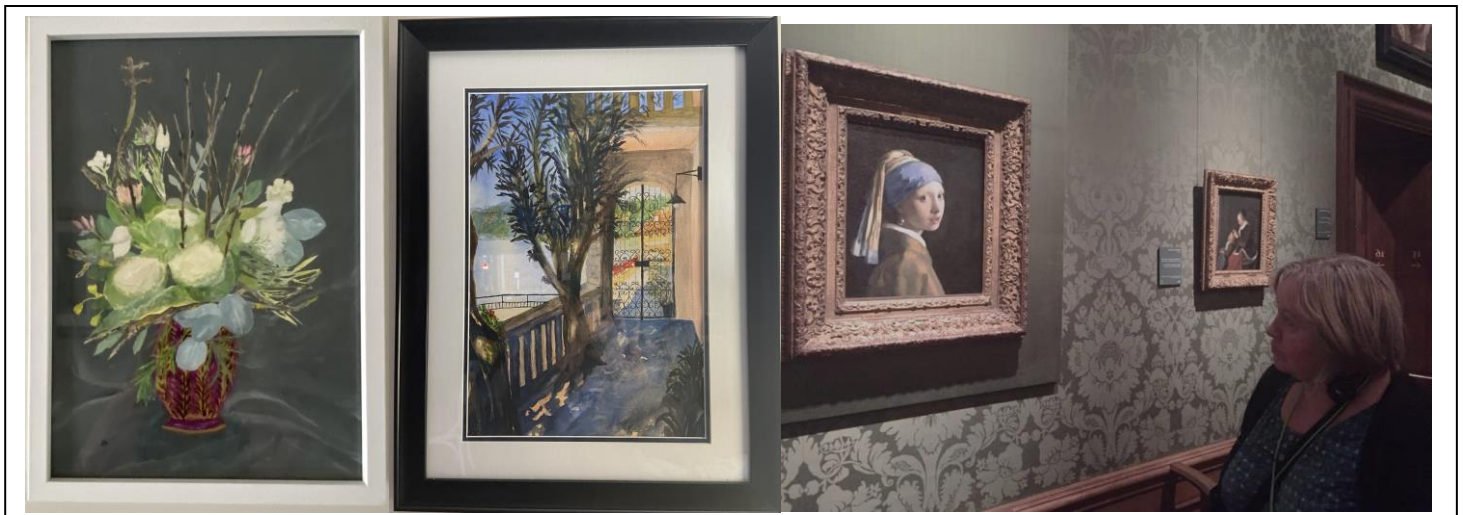
Favourite medium – watercolour and latterly gauche

Favourite colour- I love all bright colours

How long you have been a member – since October 2022

What prompted you to join BSA – a leaflet dropped in to where I was studying made me enquire. I was looking for the next step after graduating from my first year Diploma course. I love the support and enthusiasm from fellow members.

When not "arting" I love to travel I suppose that comes from living in five Countries, In January I was in Ireland and the UK and am now planning my next trip which will be around the end of September.



Artists Corner for handy hints and ideas

Some of the older members may remember Elaine LeLievre, she was an early member of the Ballarat Society of Artists; she often painted large works using acrylic and ran the Saturday painting group for many years.

Thanks to Karen Garret and Jennifer Sutterby for sharing Elaine's pattern for the painting carry bag made from a blanket.

A great way to carry and perhaps store paintings.

It would be interesting to see the price difference between now and then for the materials to make it. Or if you have an old blanket or two laying around this might be a great way to recycle or upcycle them. Perhaps one day we may have a painting bag display to see the creativity of our members flowing over to another medium.

A HANDY PAINTING BAG by Elaine LeLievre

Suggested Material. Spotlight have a stiffened 'Boston Chenille' upholstery fabric which does not fray (no need to neaten hems or seams) for \$9.95 metre, 140cm wide. Also 150 canvas for \$14.95 metre 1.5 metres makes a bag about 750cm wide, 500cm deep and 10cm sides and base, allowing for rod hems and turnings. Extra may be needed for pockets.

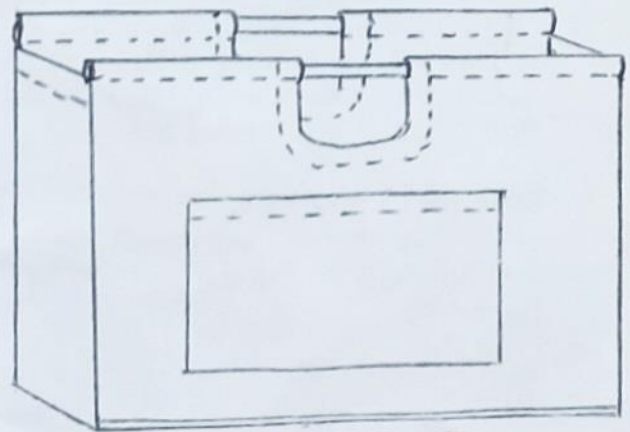
Notes. Bag may be used to carry paintings or as a work bag for paints, pallet, jars, boards, paper, etc. Get creative with pockets to fit these items, but do remember to put the pockets on before sewing up the bag. The size of the bag will depend on the use to which it is put. Old blanket or curtain material could be used.

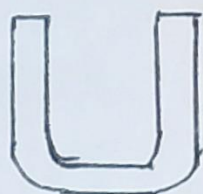
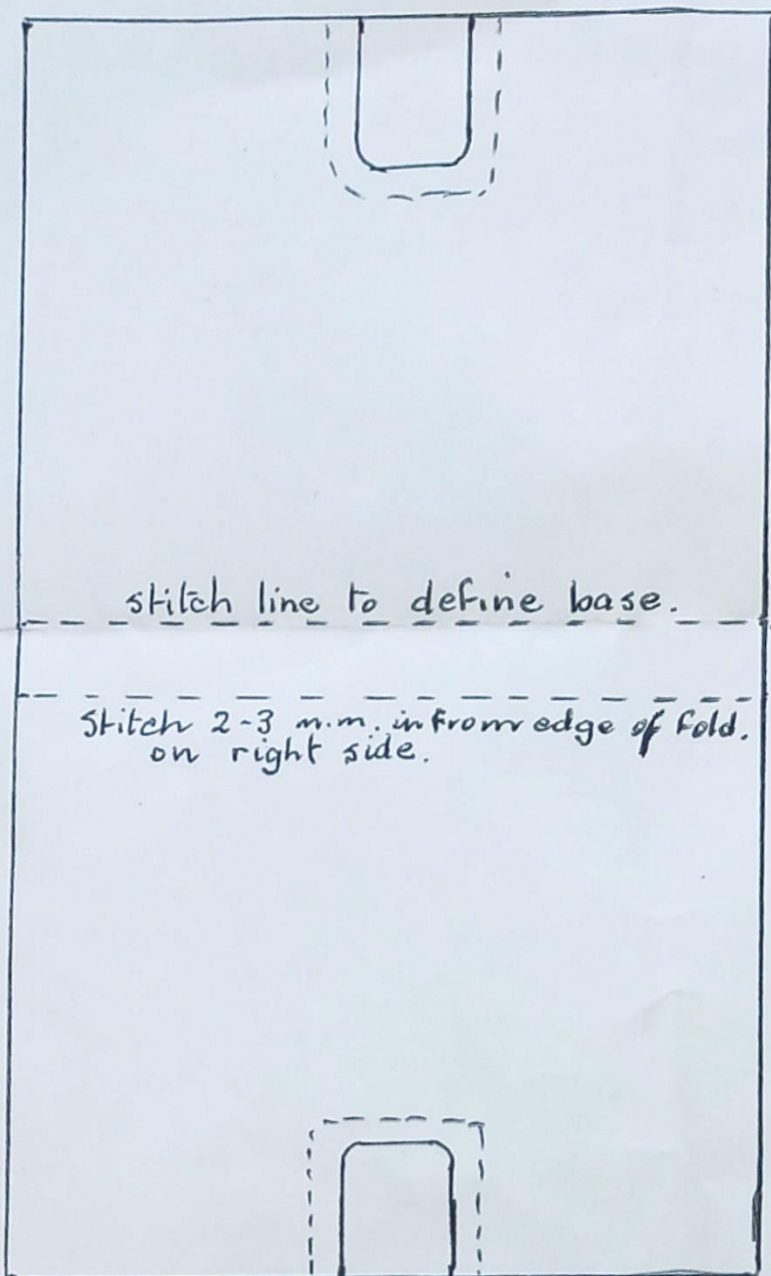
The base of the bag may be made firm by inserting a piece of cardboard, craftwood or the white plastic used for backing paintings. Cut a piece of

facing to fit the base, stitch edges and slide in the piece of card.

I bought a piece of plastic backing from Artafact, cut it to the exact size of the side of the bag and stapled it in place beneath the rod pocket hem. This stops the bag collapsing and makes it easier to load.

Wooden dowel about 1cm cut to width of bag makes the rod handles.

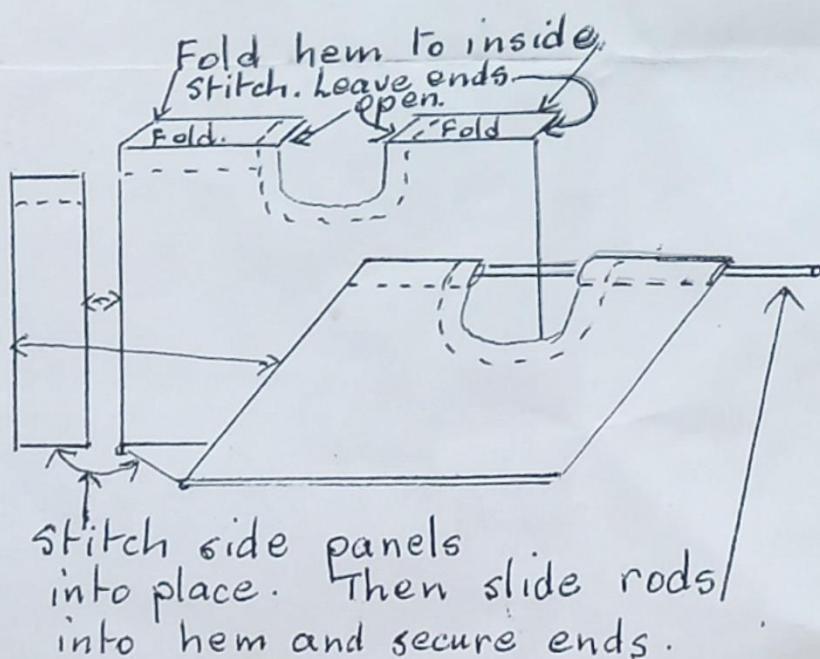
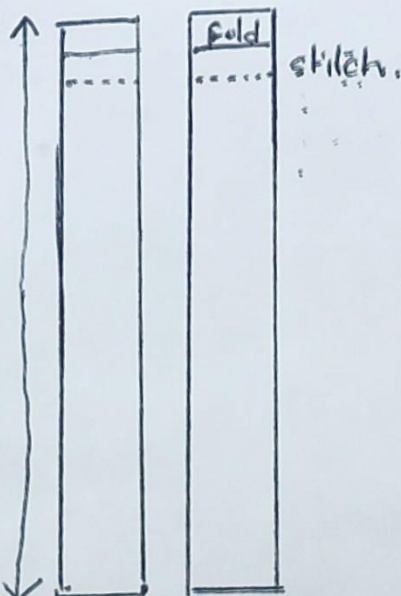




Facing for
handle
space.

Cut 2. Sew into place,
turn to inside + press.
Stitch.

Side panels - 2.




BSA Exhibitions Calendar

INFO	<p>As a general rule, we ask that people hanging art in exhibitions volunteer a couple of hours of their time to assist at the exhibition. However, if you are working or unwell, simply let us know as we don't want people to miss out on the opportunity of exhibiting.</p> <p>Register your interest as soon as possible to participate in the following exhibitions.</p>	
July	Lake Wendouree Museum 1 July to 20 November	Theme: Embracing the Seasons Roster: Volunteer for Sunday shifts between 10 am and 3 pm Contact bsamember16@gmail.com
	Winter in July 21 st July	Winter Market Stall Roster: Friday from 4 pm - 8 pm Contact bsamember16@gmail.com
September	Mercure Exhibition in October/November	Cut off date for notification is September 2023. The theme is "My Scene". More information will be sent out in June. Contact bsamember16@gmail.com

Non-BSA Exhibitions Calendar

September	Cats come to Creswick 29 Sept – 1 Oct	Theme: Cats in any medium Creswick Town Hall, Albert St Entries close on 14 August Contact sandycampbell3363@gmail.com
	Essence of Place Maldon Landscape Prize	Entries close 8th September Submit online to: Maldonartistnetwork.org.au See flyer below
All year	Radmac	110 Armstrong Street South, Ballarat Contact 5333 4617
	Webster Cafe	1 Webster Street, Ballarat Contact 5331 2498

<p>Maldon Landscape Prize</p> <h1>ESSENCE OF PLACE</h1> <p>Presented by Maldon Artist Network and Edge Galleries Judge Mary Tonkin</p> <p>First Prize of \$10,000 People's Online Choice \$1000</p> <p><i>We invite artists nationally to enter.</i></p> <p>Entries Close on 8 September, 2023. Submit online now.</p>	
--	--

The Sociables:

Ballarat Urban Sketching

During the colder weather we have asked permission to draw in the Ballarat Art Gallery and on some occasions we will be doing this. By all accounts, the first visit there was popular. No photos this time, but hopefully next time.

A few of us ventured out at Barkly Square after artshow set up and sat and drew.

We plan to meet 11 am on a Wednesday each week. If you are interested in being on the email list, please let Sue know at bsamember16@gmail.com



Lyn Cooke Found herself a nice corner to sit and draw in the art gallery. Her works here are stunning. Thank you for sharing, Lyn.

Tuesday weekly meeting

The Tuesday group meets weekly. Please contact John Canham on 0408 051 381 for details.

Art at the Framers

This continues over Winter every fortnight, as before from 6 till 8 pm. The next planned sessions are Wednesday July 5th and Wednesday July 19th. Thanks to Amie and Dan for letting us use the space.

Wednesday Coffee Morning

10 of us met at Barkly Square on the 14th June. Everyone enjoys the social aspects of getting out and about.

Next coffee morning will be Wednesday July 12th at Mercure. Please tell Sue that you plan to come, so that she can book a table in advance. bsamember16@gmail.com or 0409 431 960

Our local supporters

RADMAC

For more than 28 years Radmac has been a leading local supplier of art supplies. Offering quality products for all manner of artistic needs, they cater to both novice artists and professionals alike.

Radmac also has an exhibition space that showcases a great art display all year around. We would like to thank Radmac for offering BSA members a 10% discount. If you are looking for painting surfaces, oil paint, watercolour paint, pencils, or craft supplies, give Radmac a call on 5333 4617 or visit them at 110 Armstrong Street South, Ballarat.



ACCENT FRAMING

Member, Amie Murphy of Accent Framing offers premium custom framing and art supplies at 421 Sturt Street Ballarat. Accent Framing offers a 10% discount to BSA members. Amie is proud to support artists from the Goldfields and Victoria with a dedicated exhibition space. A new exhibition begins on the last Saturday of each month, with all displayed works available for purchase. Amie and Daniel offer prints up to 110cm wide on an Epson wide format 12-colour inkjet printer. They stock a range of high-quality fine art papers, from archival 100% cotton to metallic photo papers and canvas printing. Call to enquire on 5331 7011.



